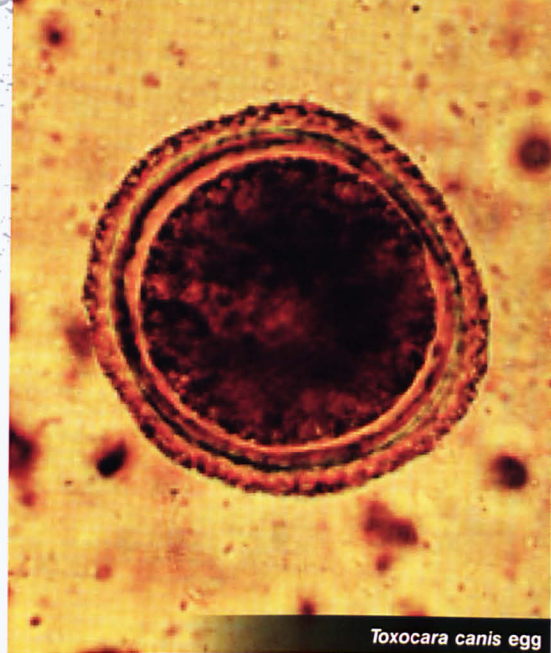




Taenia taeniaformis egg



Taenia sp. (adult)



Toxocara canis egg



Taenia sp. (40X)



Toxocara sp. (adult)

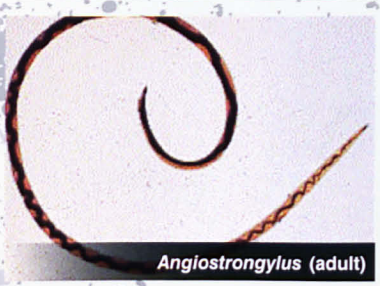
# Helminthes infections in rats

By Arney Sapaat

A study of helminthes infection on rats was conducted at four different locations. Kota Kinabalu port and Anjung Selera representing commercial area, whereas Indah Permai and Kingfisher represents residential area. Based on number of captures from four different locations, total number of 145 rats were caught representing of eight species. The species are *Rattus rattus*, *Rattus norvegicus*, *Rattus exulans*, *Rattus tiomanicus jalorensis*, *sundamy muelleri*, *Rattus argentiventer* and *Mus castaneus* which are from family Muridae and also a shrew from family Soricidae which is *Suncus murinus*. *Toxocara* spp., the nematode normally found in dogs and cats infected most of the rats at Kinabalu port. Rats are the paratenic host which play the role as the intermediate hosts for *Toxocara* spp. Anjung Selera is located at the seashore and have bushes around it making a perfect place for intermediate hosts of *Angiostrongylus malaysiensis*, *Hymenolepis diminuta* and *Hymenolepis nana*. In Kingfisher, *Taenia taeniaformis*, has highest infection and in Indah Permai residential area, *Angiostrongylus malaysiensis* were found to dominate.



Ascaris egg



Angiostrongylus (adult)



Rattus norvegicus



Rattus exulans



Suncus murinus



Rattus argentiventer



© Milos Andjara

Rattus rattus



Rattus tiomanicus